

8. WMS is a safe investment

A set of specialized software applications to facilitate and automate everyday operations in production and storage enables high productivity of business.

Precise organization of production and human resources, warehouse space and delivery of goods "just in time" towards customers in a very short period of time justifies invested funds in a software solution that keeps all factors of traceability in production under control.

GS1 marking

An essential prerequisite for traceability and self-functioning of the system is the adequate marking. In order for products to be accurately and uniquely classified, the Global Data Synchronization Network (GSDN) uses GS1 for global product classification.

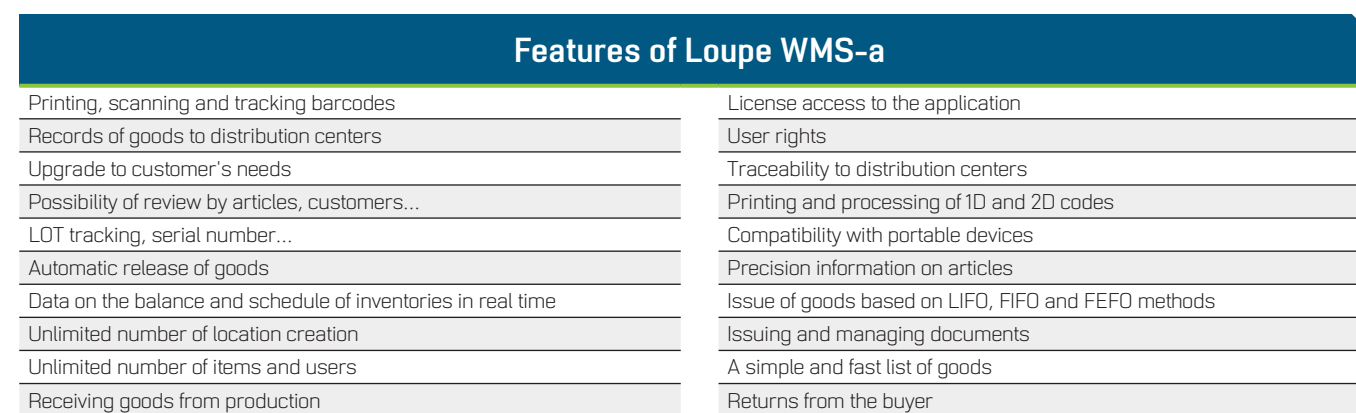
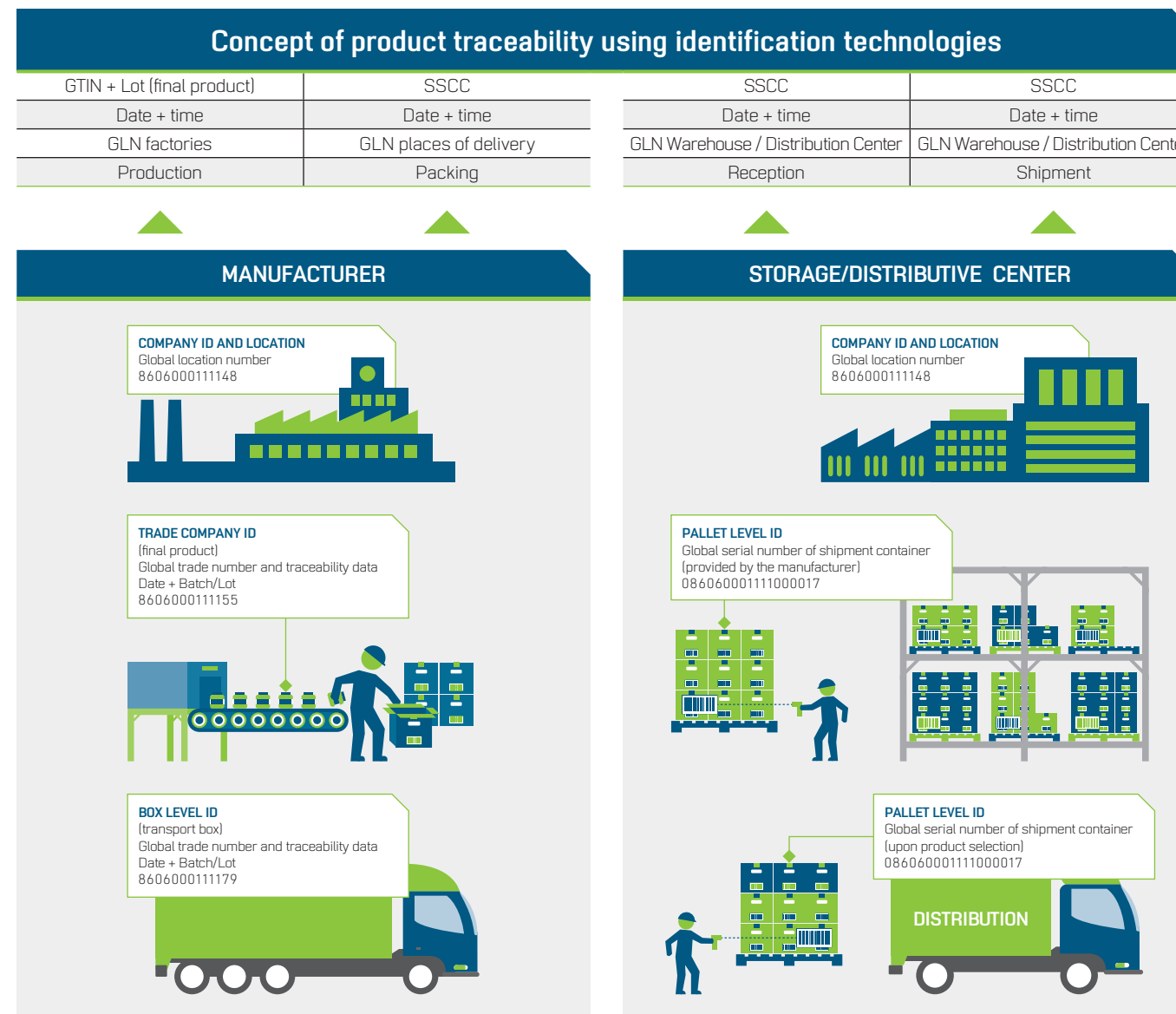
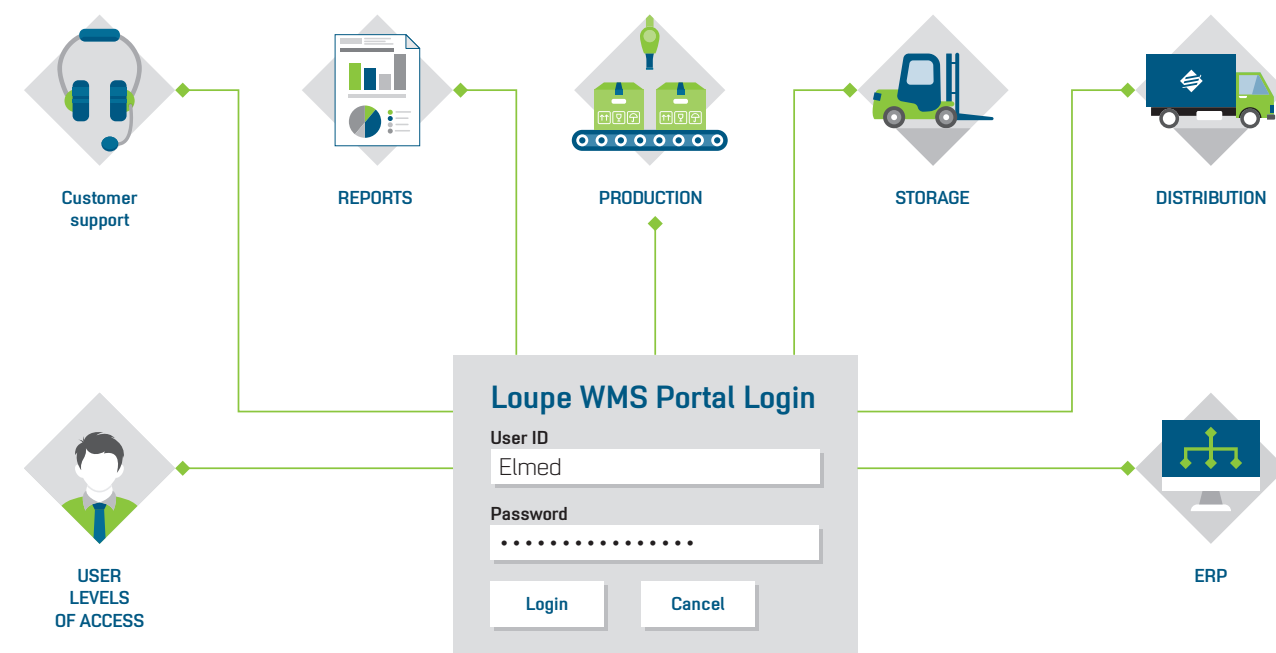
The GS1 system is a set of standards that enable efficient management of global, multi-industrial supply chains, through the unique identification of products, transport units, locations and services. It facilitates e-commerce processes, including complete tracking (searchability). In addition to providing unique Identification Numbers, GS1 also

provides additional information, such as what dates are "valid until", serial numbers and party numbers can be displayed in bar code form.

The system is designed so that it can be used in any industry, commerce or public sector and that no changes introduced into the system will harm the current users.

ELMED and Loupe WMS provide:

- Permanent support 24/7
- The flexibility and customization of the application to your business
- Effective solution of all requirements
- Easy and fast communication



ELMED d.o.o.
JNA 166, 21235 Temerin, Serbia

T: +381 (0) 21 844 767
F: +381 (0) 21 844 787

office@elmedint.com
www.elmedint.com

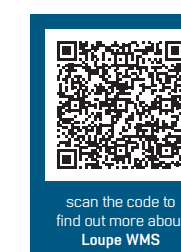


ELMED company operates in accordance with ISO9001 standard



LoupeWMS

Inventory management system



scan the code to find out more about Loupe WMS



Sistem za upravljanje zalihama Loupe WMS

What is Loupe WMS?

Inventory management system (WMS) is software app, designed to support storages and distributive centers. Such software represents the solution for logistic traceability of goods and storage

business, thus it facilitates everyday planning, organizing, movement and safekeeping of products within and out of storage, as well as directing and control of available human resources.

Why to introduce Loupe WMS?

Loupe WMS provides the ability to monitor the complete traceability of the operation from the receipt of the produced product to the delivery itself. The software provides high productivity, predictability, and smart operation in all operations across the warehouse.

The ability of the system to control and optimize the movement of goods is based on the logistic rules and capabilities of the system to provide in real time information on the status and location of goods, warehouse stock, and reception and requests for delivery. It also enables optimization of operational and physical resources to ensure the quality of service throughout the process.

To make your production lines work smoothly and make your customers happy, getting the right materials and products at the right place at the right time is a mission of paramount importance to any manufacturer.

Implementation of the **Loupe WMS** makes the warehouse work efficient and easy, and allows the losses due to various warehouse processes to be minimized by directing employees to the most economical way of functioning.

Properly organized warehouses also eliminate the time employees spend in searching for specific products.

Benefits of use Loupe WMS:

1. Maximum functionality

Maximize productivity, efficiency, and organization of production and warehousing processes.

2. Easy to use and requires minimal training

The advantage of **Loupe WMS** is in its simple implementation into the business system, as well as the minimum time required for employee training.

A well-designed WMS allows users to spend less time in setting and monitoring everyday activities, so they are able to quickly adapt to new requirements.

3. Easy connection to a large number of ERP systems

The ability to connect the main company software with the application for logistic traceability of goods is extremely important. It is the **Loupe WMS** that enables you to improve your business and timely obtain and store the data necessary for the operation of your company.

4. Complete tracking of process traceability

Loupe WMS allows you to monitor and control the door-to-door process, from receipt to delivery, and gives you precise information

at every moment for products, employees and all processes that take place:

- Receiving goods from production
- Storage of received goods
- Organization of warehouse space
- Stock control
- Re-positioning goods in the warehouse itself
- Conversion of goods from one form of packaging to another
- Ordering
- Updating locations
- Issue of goods on the basis of various factors (FIFO, LIFO, FEFO ...)
- A list of goods
- Reporting
- Return of goods from the buyer

5. The Loupe WMS is modular

In addition to being compatible with a large number of ERPs, the quality of our WMS is in its

User experience:

"By implementing the **Loupe WMS** in our business system, we are enabled to mark products according to the GS1 standard, to improve the organization of production and human resources, as well as to increase the productivity of the company."

Eva Vučurović
Production manager
Žitopromet mlin ad Senta



multi-modality. The system is fully applicable in all branches of production and is adapted to various business modes. Different software applications such as eBox and ePallet enable the automatic labeling of packaged packages and pallets according to the GS1 standard and preparing for further processing. Also, document exchange modules, mobile application modules, and desktop application modules constitute the hardware configuration of **Loupe WMS**.

6. Reporting by a large number of parameters

The data as well as their presentation are extremely important for the company's business. **Loupe WMS** allows you to collect all data from your production process, and to display them in a very simple and understandable way.

7. Automation and integration with marking and packaging systems

Loupe WMS is compatible with systems for primary, secondary and tertiary labeling. Products that are packaged in bottles, boxes, bulk packages and pallets and for which packaging and labeling are used for a large number of hardware are very easily connected with a set of applications that control and manage the entire process.

User experience:

"In cooperation with ELMED we have provided a modern and automatic marking of the pallet in accordance with the GS1 standards, which significantly improved the reliable handover of goods between production and warehouses, as well as the logistic traceability of the pallet through the distribution chain".

Goran Savović
Factory manager
Knjaz Miloš ad Arandelovac



Scan the code for more information on **pallet marking**

