

# AxI 50i – maximum printing flexibility

The **AxI 50i** continuous ink jet (CIJ) printer can print high quality codes on virtually any surface and product; whether flat, round, uneven or moving.

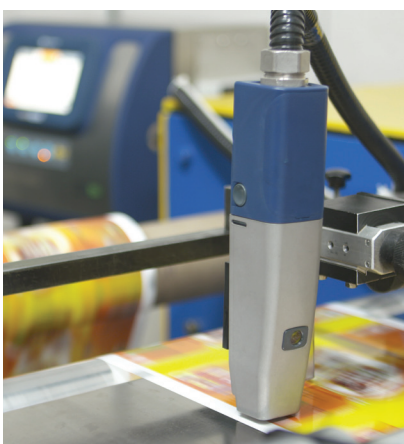
The **AxI 50i** is compatible with Industry 4.0 standards. Connecting to **Domino Cloud** enables remote diagnostics and 24/7 visibility of your printers' performance. The integrated touchscreen user interface provides a class-leading user experience.

Domino's service-free ink system with **i-Pulse** printhead technology utilising Domino-developed inks provides clear, readable text, graphics and barcodes while ensuring regulatory compliance.



## Designed for maximum uptime

- ◆ Operation is simple through single button start, dynamic on-board monitoring & control to ensure excellent prints even in fluctuating ambient temperatures, and consumable changes in-run.
- ◆ The **AxI 50i** is service-free; only the **iTechx** module (ITM) needs to be replaced once annually, which is a less-than-ten-minutes operator task.
- ◆ Coding automation and integration into your ERP and MES business systems are supported. Connect to **Domino Cloud** to benefit from remote printer performance overviews and diagnostics.



## i-Pulse printhead technology

- ◆ Printheads start up first time even after extended shutdowns thanks to Domino's unique nozzle-sealing technology.
- ◆ Best readability and best reliability at faster speed in a higher 9-drop resolution (versus traditional 7 drops) plus saving up to 24% in ink usage result from optimised ink drop formation.
- ◆ The durable 60µ printhead delivers consistent code quality.

## Adding value to your product

- ◆ Domino supplies a range of inks manufactured to GMP (Good Manufacturing Practice) which are compliant with leading global legislation for food packaging.
- ◆ Our inks offer lasting adhesion, lightfastness and high contrast even on difficult substrates (e.g. polyolefins) and after harsh post-print processes.
- ◆ Environmental-friendly options, reduced ink consumption, optimised packaging and fully-depleting cartridges reduce waste and ecological footprint.

[www.domino-printing.com](http://www.domino-printing.com)



# A complete solution



Our services are designed to provide operational insight so you can eliminate downtime and maximise production efficiency

## Operational support

An outstanding level of care, wherever you are. Our **SafeGuard** packages provide high-quality, on-site assistance and AR-enabled remote guidance from our engineers. **SafeGuard** helps to ensure we can be with you when you need us most.

## Automatic code inspection

Ensure every code that leaves your factory is present and correct, and free up operator time. With the R-Series, Domino's range of vision control systems, you can automate your code inspection to validate code presence, placement, and readability.

## Control software

Minimise errors using Domino's **QuickDesign** software. Control your product codes from a central location and streamline product changeovers. **QuickDesign** uses standard communication protocols and can be integrated into existing ERP systems.

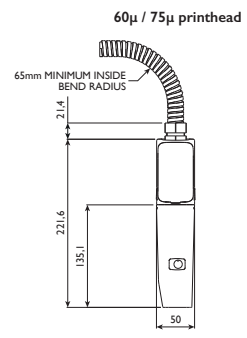
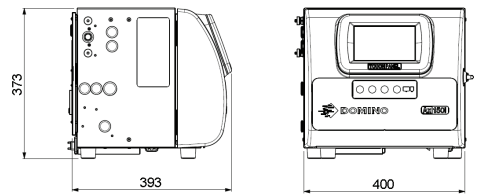
## Smart production

Gain operational insight by connecting your printer to **Domino Cloud**. Obtain production analytics dashboards and receive system error alerts. **Domino Cloud** provides you with the information you need to run your operations more efficiently.



## Technical specification AxI50i

Printing Specification	
Printhead nozzles	60µm
Speed – 1 line, 5 dot characters(m/s)*	5,1
Dot size(mm)**	0.31
Print heights (single print head)	Up to 32 dots/20mm
Supported code formats	full unicode support text, graphics, I-D, 2-D codes
Ownership Specification	
User interface	7" Touchscreen
Conduit length	3m
Printhead type	Straight
Software	<b>QuickStep 3</b>
Comms ports	Cabinet USB port (x1); Ethernet RJ45 port (x1)
Printer status monitoring	4 stage beacon output (x1); 3 stage alarm output (x1)
Cartridge replacement (Ink and make-up)	Auto recognition; 20 second operator task; no line stop required
Servicing – ITM replacement	Sub 10 minute operator task. Line stop required
Service interval***	Typically every 12 months
Material	304 stainless steel cabinet (5 sides) - nylon door; IP55
Consumables	
Inks	Wide range of black and coloured inks including options for food packaging, colour change, industrial, UV-fluorescent
Ink cartridge volume	825ml
Make-up cartridge volume	1200ml
Optional Hardware Packs****	
RS232 pack	RS232 port (x1)
GPIO pack	I/O – 4 inputs/4 outputs (x1)



### Logos and 2D Codes



### Multi Language and Mixed Fonts



\*Speed quoted at the following characters per inch ---- 60µm = 10 characters  
\*\* Dots size may vary depending on substrate type \*\*\*service interval is ink type dependent \*\*\*\* May vary per sales region



## TALK TO AN EXPERT

Contact details: [enquiries@domino-uk.com](mailto:enquiries@domino-uk.com)  
Telephone: +44 1954 782 056  
Website: [www.domino-printing.com](http://www.domino-printing.com)